

\$769,899 - 25 Cityline Mount Ne, Calgary

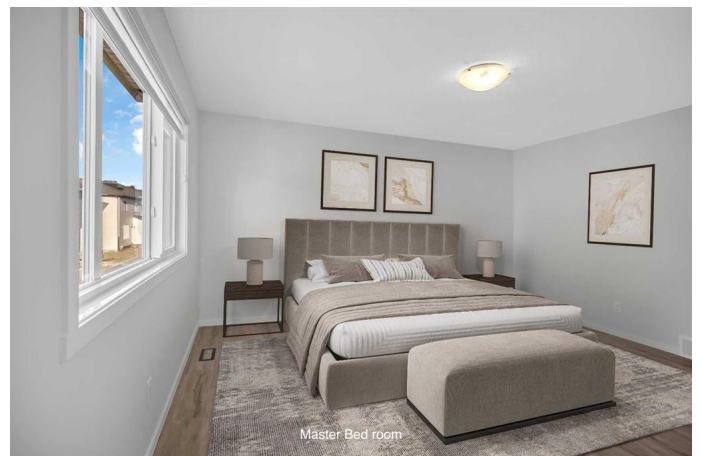
MLS® #A2200196

\$769,899

4 Bedroom, 4.00 Bathroom, 1,963 sqft
Residential on 0.07 Acres

Cityscape, Calgary, Alberta

Welcome to your FULLY UPGRADED dream home in Cityscape NE! This BRAND-NEW, EAST-FACING property sits on a SPACIOUS CONVENTIONAL LOT (1.2M Space on both side of House), offering 1,963 SqFt of above-ground living space, a double attached garage, and a 1-bedroom legal suite with a separate entrance—perfect for rental or extended family. Designed for modern living, the OPEN-CONCEPT MAIN FLOOR is bright and inviting, with LARGE WINDOWS that flood the space with NATURAL LIGHT. The CONTEMPORARY KITCHEN IS THE HEART OF THE HOME, featuring full-height cabinets, quartz countertops, an extended island, a GAS STOVE, CHIMNEY HOOD FAN, built-in microwave, and a sleek Blanco black sink and faucet. Packed with PREMIUM UPGRADES, this home boasts 9' Ceilings, LUXURY LOW-MAINTENANCE LVP FLOORING ON ALL LEVELS (EXCEPT STAIRS), DESIGNER BLINDS, UPGRADED POT AND PENDANT LIGHTING & HIGH-END SS APPLIANCES, BBQ Gas Line. Upstairs, you'll find three spacious bedrooms, including a LUXURIOUS MASTER SUITE (DUAL VANITIES & RAISED COUNTER HEIGHT) with a 5-piece ensuite and walk-in closet. A versatile bonus room, large laundry room with built-in shelving, and a 4-piece common bath add to the home's functionality. Step outside to your WEST-FACING BACKYARD, perfect for summer barbecues or relaxing evenings. The DOUBLE ATTACHED GARAGE offers winter



protection, with extra parking available on the cement driveway. The fully finished BASEMENT LEGAL SUITE with 2 EGRESS WINDOWS comes with a SEPARATE ENTRANCE, bedroom, full kitchen, laundry, Additional Storage in Utility room (2 FURNACES, TANKLESS HOT WATER TANK) and 4pc bath, making it an excellent rental space. Located perfectly on QUIET Street while facing to Open community lane in one of Calgary’s fastest-growing communities, this home offers easy access to parks, schools, shopping, Stoney & Metis Trail, downtown, and the airport. The Home comes with BUILDER & ALBERTA NEW HOME WARRANTY. 3D/Virtual Tour Link is on Listing. Incredible Value...Won't Last long. Don't miss it now"schedule your viewing today!

Built in 2025

Essential Information

MLS® #	A2200196
Price	\$769,899
Bedrooms	4
Bathrooms	4.00
Full Baths	3
Half Baths	1
Square Footage	1,963
Acres	0.07
Year Built	2025
Type	Residential
Sub-Type	Detached
Style	2 Storey
Status	Active

Community Information

Address	25 Cityline Mount Ne
Subdivision	Cityscape

City	Calgary
County	Calgary
Province	Alberta
Postal Code	T3N 2N7

Amenities

Parking Spaces	4
Parking	Concrete Driveway, Double Garage Attached, Garage Faces Front
# of Garages	2

Interior

Interior Features	Breakfast Bar, Chandelier, Crown Molding, Double Vanity, Kitchen Island, No Animal Home, No Smoking Home, Open Floorplan, Pantry, Quartz Counters, Separate Entrance, Vaulted Ceiling(s), Vinyl Windows, Walk-In Closet(s), Wired for Data
Appliances	Dishwasher, Dryer, Gas Stove, Microwave, Range Hood, Refrigerator, Tankless Water Heater, Washer, Window Coverings
Heating	Forced Air, Natural Gas, Geothermal
Cooling	Other
Has Basement	Yes
Basement	Exterior Entry, Finished, Full, Suite, Walk-Up To Grade

Exterior

Exterior Features	BBQ gas line, Private Yard
Lot Description	Back Yard, Rectangular Lot, Street Lighting
Roof	Asphalt Shingle
Construction	Vinyl Siding, Wood Frame
Foundation	Poured Concrete

Additional Information

Date Listed	March 7th, 2025
Days on Market	52
Zoning	R-G

Listing Details

Listing Office	RE/MAX Real Estate (Mountain View)
----------------	------------------------------------

Data is supplied by Pillar 9â„¢ MLS® System. Pillar 9â„¢ is the owner of the copyright in its MLS® System. Data is deemed reliable but is not guaranteed accurate by Pillar 9â„¢. The trademarks MLS®, Multiple Listing Service® and the associated logos are owned by The Canadian Real Estate Association (CREA) and identify the quality of services provided by real estate professionals who are members of CREA. Used under license.